

see also VF-ART



**A LEGACY OF LANDSCAPE**  
**FRANCES DAY LUKENS**  
**WATERCOLOR PAINTINGS OF GREENSBORO**

**AUGUST 16 - SEPTEMBER 1, 1997**  
**GREENSBORO HISTORICAL SOCIETY**

*PROJECT CONCEIVED AND DIRECTED BY MARY DARLING HEWES*

## **INTRODUCTION AND FAMILY HISTORY**

Few Greensboro artists have been more highly praised than Frances Day Lukens (1897-1961). Her place in—and her contributions to—Greensboro art, architecture, and history is well established, thanks to the interest of many friends and colleagues around Caspian Lake. Her paintings reveal a strong sense of design, a love of gardening, and an understanding of horticulture.

This exhibition, which celebrates Frances Day Lukens 100th birthday this year, places a special emphasis on the many places in Greensboro that held a particular interest for her. The paintings document the colors and shapes of the landscapes and buildings of the community in the years before and after World War II, providing a memorable pictorial history of both time and place.

Frances Blakiston Day was born in Philadelphia in 1897. She graduated from Bryn Mawr College at the top of her class in 1919 and went on to study architecture at the Massachusetts Institute of Technology, one of the very few women in her class. Her father was Frank Miles Day, the eminent Philadelphia architect, and her brother Kenneth Day was a distinguished architect, especially noted for his "International Style" houses in the 1930s.

In 1923 Frances Day married Edward Clark Lukens, and in 1929 they began their annual summer sojourns in Greensboro with their three young children—Alan, Anne, and Francy. They purchased one of the original cottages in Aspenhurst and spent every summer there. Over the next 25 years, many of their friends joined them as summer residents of Greensboro.

During the summers, Frances Lukens often painted with her friends Bobsie Eisner and Blanche Pleasants, among others. A photo in the exhibit shows Frances seated outdoors on a campstool with her palette and sketch pad. She also accompanied her husband when he went fly-fishing; she would settle by the edge of the stream to paint. At other times of the year, she painted in Philadelphia, her lifelong home, and on travels to Europe. The medium of watercolor painting allowed her to record her impressions of landscapes and buildings directly and quickly wherever she travelled. Her paintings of Greensboro form a special legacy.

## LISTING OF PAINTINGS

- 1     *Greensboro Street Scene*  
1947  
19" x 22"  
Kathryn E. Redfern
- 2     *Caspian Inn and Mill*  
before 1937  
23½" x 29¼"  
Greensboro Free Library
- 3     *Old Riding Stable*  
before 1950  
18¾" x 15½"  
Mary D. Hewes
- 4     *Behind Willey's Store*  
09/07/35  
18" x 15"  
Alan & Susan Lukens
- 5     *George Young's Farm*  
n.d.  
19½" x 24½"  
Philip S. Cook
- 6     *The Black Farmhouse*  
1948  
15¼" x 19½"  
Richard K. Stevens, Jr.
- 7     *View from Campbell's Corner  
with Scoon Cottage*  
1958  
17" x 21"  
Tom & Barbara Woodward

- 8      *The Hathaway (later Olmsted) Farm*  
before 1950  
20" x 26"  
Joanne N. Olmsted
- 9      *The Aspenhurst (now Wright) Farm*  
1944  
22¼" x 27¼"  
Alan & Susan Lukens
- 10     *Sailboats off Aspenhurst*  
1941  
18" x 23"  
Alan & Susan Lukens
- 11     *The Lukens Cottage, Aspenhurst*  
before 1945  
7¼" x 5¼"  
Frances Lukens Hays
- 12     *The Darling Cottage, Aspenhurst*  
late 1950s  
14½" x 17½"  
Jean J. D. Peale
- 13     *The Cameron (now Hasen) Cottage, Aspenhurst*  
before 1958  
10½" x 7½"  
George & Charlotte Hasen
- 14     *The Old Stone (now Bascom) Farmhouse and Barn*  
before 1940  
24½" x 28½"  
Alan Lukens & Anne Lukens Saunders

- 15     *Hardwick Street Barn*  
n.d.  
21" x 25"  
Alan & Susan Lukens
- 16     *Hardwick Street Cemetery and Bayley-Hazen Road*  
n.d.  
22½" x 28½"  
Highland Lodge
- 17     *The Irish Barn*  
before 1939  
26" x 30"  
Alan Lukens & Anne Lukens Saunders
- 18     *The Wilson (now Ranz) Barn*  
1948  
21¾" x 26¾"  
Frances Lukens Hays
- 19     *Five Golf Course Views*  
1936  
18" x 29"  
Christine Armstrong, Lise Armstrong & Karin Newhouse
- 20     *The Ingalls (now McIntyre) Barn*  
n.d.  
18" x 25"  
Edward Lukens Hays
- 21     *Mystery Site*  
before 1940  
20½" x 26½"  
Frances Lukens Hays

## ***FRIENDS OF FRANCES DAY LUKENS***

Over the course of more than 30 years, many friends of Frances and Ted Lukens came from Bryn Mawr College, Princeton University, and Philadelphia to Greensboro, greatly enriching the community. Like ripples in a pool, these friends in turn encouraged other friends to come. Some of these families are listed below.

Timmy & Inky Brown and family

Jean & John Cannon and family

Polly & Herb Carter and family

Frances & Maurice Darling and family

Margaret & René Daudon and family

Charlotte & George Hasen and family

Dodo & Bill Jacobs and family

Betty & Dick Stevens and family

Dorothy (now Stevens) & Sidney Mackenzie and family

Nancy Stevens Griffin and family

As we researched the whereabouts of Frances Day Lukens' paintings of Greensboro and environs, we located an additional 25 paintings owned by her friends and family, among them Laura Drown and Charles Campbell Hays. Because of space limitations in the Greensboro Historical Society, not all the paintings could be included in the exhibit. We thank the friends and family members who offered to show their paintings in the exhibit.

## CREDITS & ACKNOWLEDGMENTS

*Mary Darling Hewes* conceived of the exhibit and directed its preparation. In the collection and selection of paintings, the installation of the exhibit, and the preparation of the brochure, *Frances Lukens Hays*, *Frances Blakiston Hays* and *Timothy Case*, *Alan and Susan Lukens*, *Anne Lukens Saunders*, and *Susan Lukens Stone* provided valuable assistance. *Sharon Reihmer* of the Framing Format in St. Johnsbury matted and framed several of the paintings to preserve their quality better. Over the past year, *Barbara and Tom Woodward* provided the strong support of the Greensboro Historical Support to this project.

### Greensboro Historical Society

#### Officers

Ann Pinkney, President  
Wilhelmina Smith and Nancy Buckley, Vice-Presidents  
Margaret Kelly, Secretary  
Janet Long, Treasurer

#### Trustees

Walter Ciaschini	Dorothy Ling
Bridget Collier	Jean Smith
Allen Davis	Lacey Smith

—Brochure design and production by  
*Mimi Carter Haley, Frances Blakiston Hays, and Evan Case*

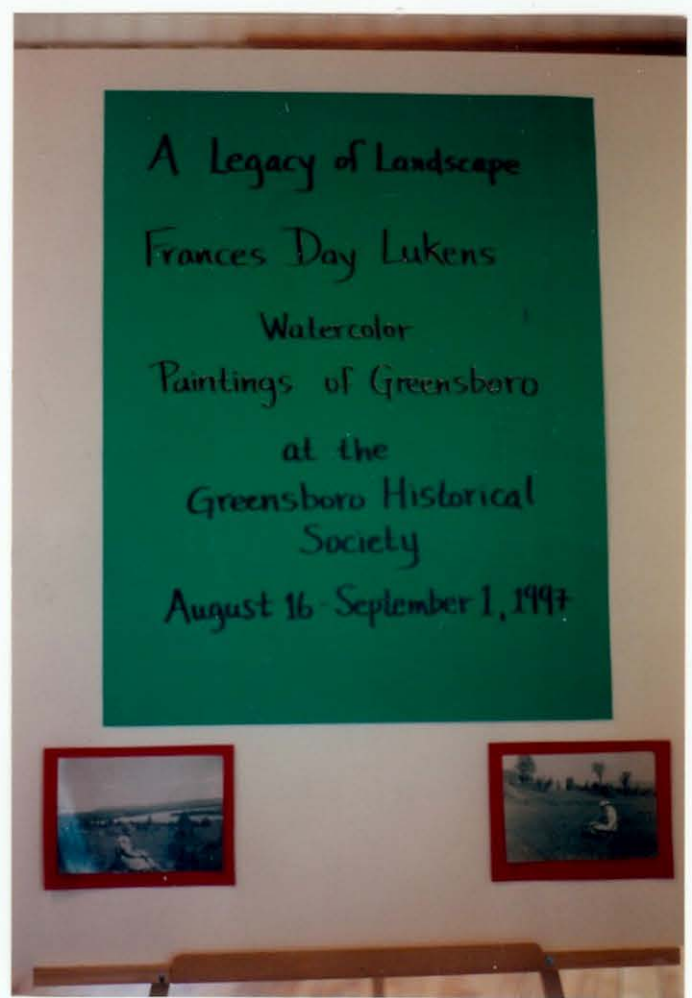
—Photographs of sites by  
*Frances Lukens Hays and Timothy Case*

—Photographic services by *Edward Lukens Hays*









Poster at entrance to display

Paint Box and Canvas Shot  
of  
Frances Ray Lukens

---

Opening of Lukens Exhibit  
8/16/97

Paintings #8 and #9





Opening of Lukens Exhibit  
8/16/97

Painting #7

Opening of Lukens Exhibit  
8/16/97

Paintings #2, #3, #4









F-GHS Events  
1992



Greensboro Historical Society - 1992

Opening of Frances Day Lukens Art Exhibit

Clarke Hosen, Mary Hosen, Janie Hosen, Franay Hays



F-GHS Events  
1992



Greensboro Historical Society - 1992

Opening of Frances Day Lukens Art Exhibit

Clarly Hays, Mary Hewes, Janie Hays, Frances Hays

---

Opening of Lukens Exhibit  
8/16/97

Mary Darling Hewes, Frances Lukens Hays

Paintings #15, #16, #17

F-GHS-Events



Opening of Lukens  
Exhibit

8/16/97

Alan Lukens, Susan Lukens  
Susie Lukens Stone + son



Opening of Lukens  
Exhibit

8/16/97

Mary D. Hewes

Painting #15





Opening of the  
Lukens Exhibit

8/16/97

Larry Hewes

Alan Lukens

Susie Lukens

Opening of the  
Lukens Exhibit

8/16/97

Dodo Jacobs

Opening of Lukens Exhibit

Dodo Jacobs, Frances Lukens Hays

Mary D Hewes

Paintings #5, #6





Opening of Lukens  
Exhibit

8/16/97

Anne Pinkney

pres- GHS

Susan Lukens

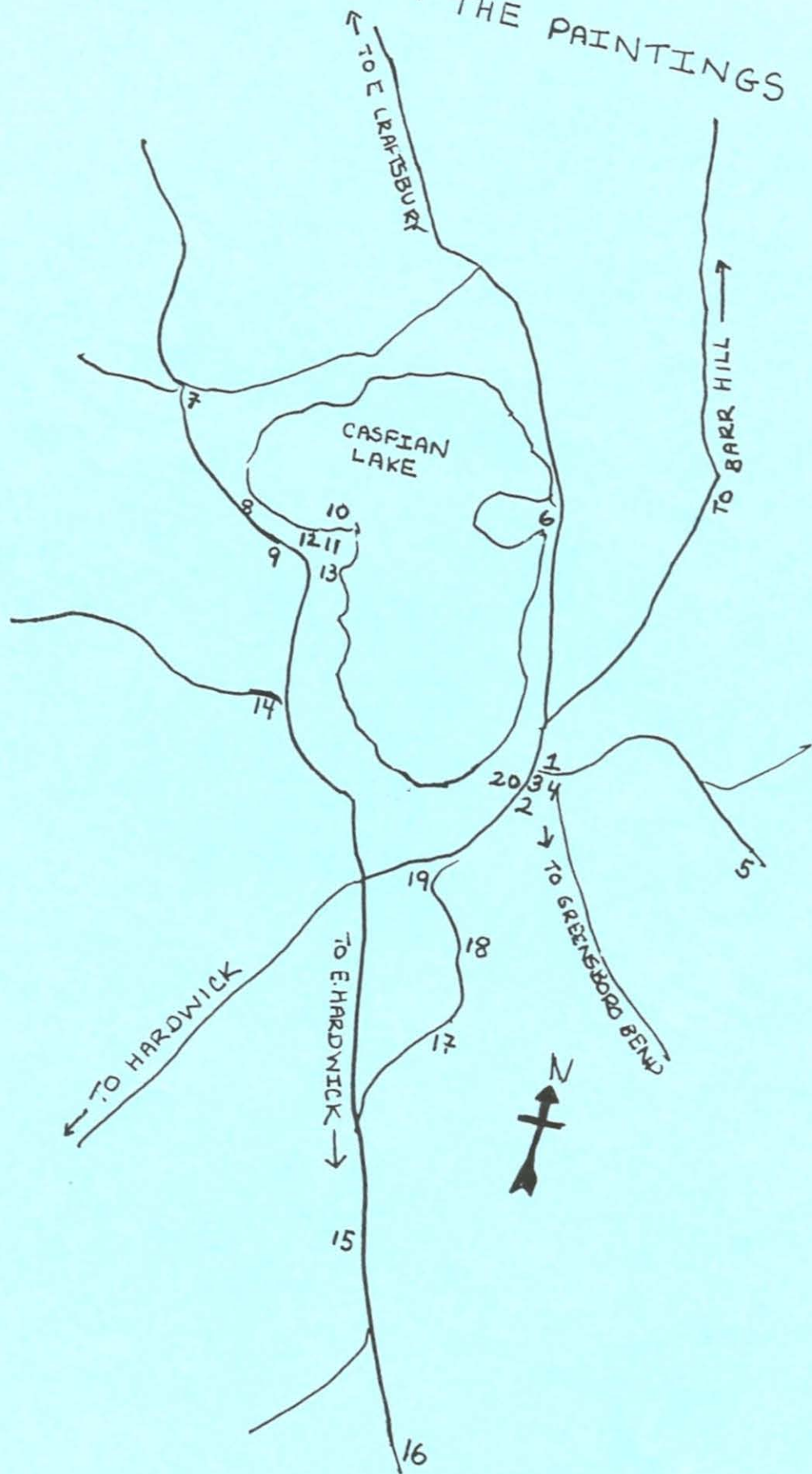
Opening of Lukens Exhibit  
8/16/97

Ltor

Gertrude Sowles, Jim Sowles,  
Mary Hewes, Frances Lukens Hays,  
Siddy Sowles Painting #2



# LOCATIONS OF THE PAINTINGS







Owner of painting  
from this print — Library

View of  Res. in ptg.





FOTO 60 FILM 26 DATE 08/26/97 4 ROTE 651592

#1



FOTO 61 FILM 26 DATE 08/26/97 4 ROTE 651592

#2



1 *Greensboro Street Scene*

194~~7~~

19" x 22"

On loan from Kathryn E. Redfern

2 *Caspian Inn and Mill*

before 1937

23 1/2" x 29 3/4"

On loan from the Greensboro Free Library





3 *Old Riding Stable*  
before 1950  
18 1/4 x 15 1/2"  
On loan from Mary D. Hewes





4 Behind Willey's Store  
09/07/35  
18" x 15"  
On loan from Alan and Susan Lukens





5 *George Young's Farm*  
n.d.  
19 1/2" x 24 1/2"  
On loan from Philip S. Cook





6 *The Black Farmhouse*  
1948  
15 1/4" x 19 1/2"  
On loan from Richard K. Stevens, Jr.



7 *View from Campbell's Corner  
with Scoon Cottage*  
1958  
17" x 21"  
On loan from Tom and Barbara Woodward





8 *The Hathaway (later Olmsted) Farm*  
before 1950  
20" x 26"  
On loan from Joanne N. Olmsted





9 *The Aspenhurst (now Wright) Farm*  
1944  
22 1/4" x 27 1/4"  
On loan from Alan and Susan Lukens



10 *Sailboats off Aspenhurst*  
1941  
18" x 23"  
On loan from Alan and Susan Lukens



11 The Lukens Cottage, Aspenhurst  
before 1945  
7 1/4" x 5 1/4"  
On loan from Frances Lukens Hays







12    *The Darling Cottage, Aspenhurst*  
late 1950's  
14 1/2" x 17 1/2 "  
On loan from Jean J.D. Peale







13    *The Cameron (now Hasen) Cottage, Aspenhurst*  
before 1958  
10 1/2" x 7 1/2"  
On loan from George and Charlotte Hasen





14    *The Old Stone (now Bascom) Farmhouse and Barn*  
before 1940  
24 1/2" x 28 1/2"  
On loan from Alan Lukens and Anne Lukens Saunders

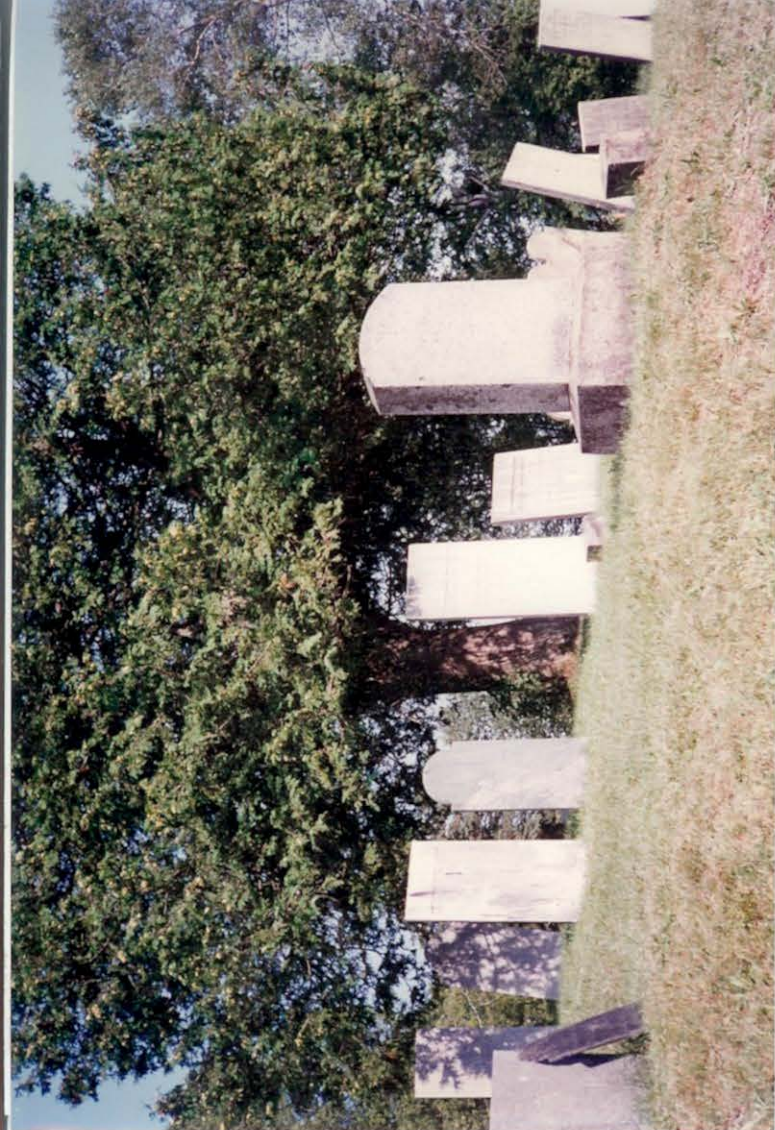




15 *Hardwick Street Barn*  
n.d.  
21" x 25"  
On loan from Alan and Susan Lukens







16 *Hardwick Street Cemetery and Bayley-Hazen Road*  
n.d.  
22 1/2 " x 28 1/2 "  
On loan from Highland Lodge





17 *The Irish Barm*  
before 1939  
26" x 30"  
On loan from Alan Lukens and Anne Lukens Saunders







18    *The Wilson (now Ranz) Barn*  
 1948  
 21 3/4" 26 3/4 "  
 On loan from Frances Lukens Hays





19 *Five Golf Course Views*

1936

18" x 29"

On loan from Christine Armstrong, Lise Armstrong  
and Karin Newhouse



20    *The Ingalls (now McIntyre) Barn*  
       n.d.  
       18" x 25"  
       On loan from Edward Lukens Hays



21 *Mystery Site*  
before 1940  
20 1/2" x 26 1/2"  
On loan from Frances Lukens Hays





FRIENDS OF FRANCES DAY LUKENS

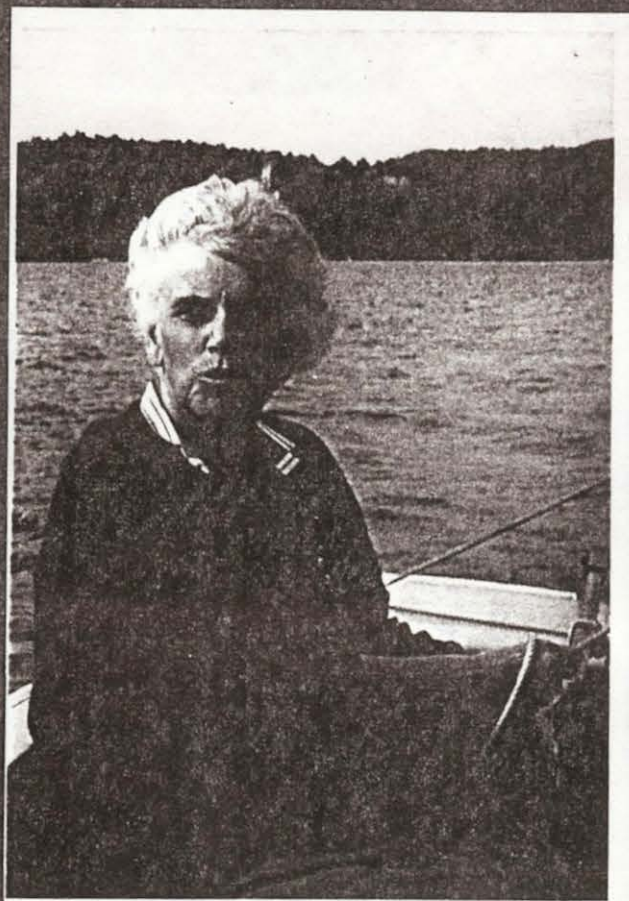
Bryn Mawr College Class of 1919



Margaret Dent Daudon  
(mother of Janine Hawkes)







Frances Darling  
(mother of Mary Hewes)

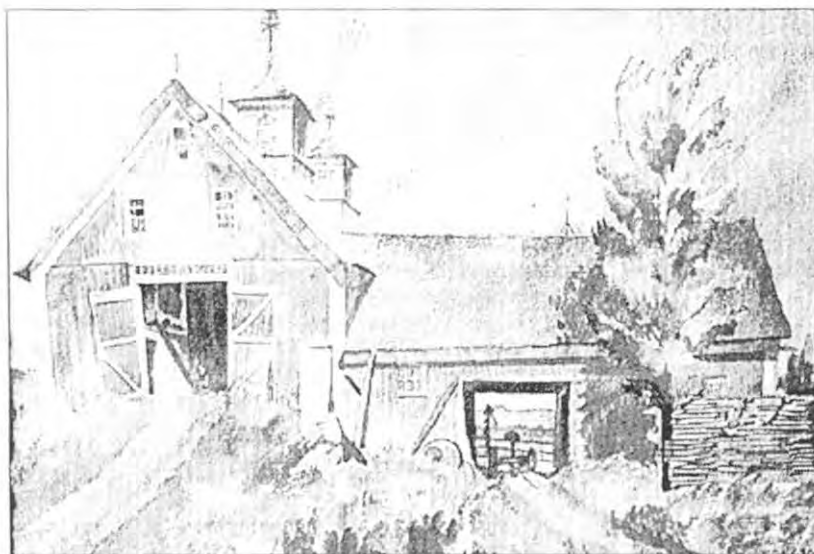


Beatrice Sorchan Binger  
(mother of Charlotte Hasen)

FIVE FRANCESSES PICNICKING IN 1979

(Left to Right)

Francie Lukens  
Francy L. Hays  
Francy B. Hays  
Franny Darling  
Franny Peale



*Paintings by Frances Day Lukens will be on display at the Greensboro Historical Society beginning Aug. 16. The show is entitled "A Legacy of Landscape" and celebrates the 100th anniversary of Lukens birth.*

## Lukens Legacy Of Landscape

by Dorothy M. Ling

GREENSBORO — Watercolor paintings of the late Frances Day Lukens (1897-1961) will be placed on exhibit Saturday, Aug. 16, at the Greensboro Historical Society.

"A Legacy of Landscape" will celebrate the 100th anniversary of the birth of this artist and longtime resident of the Caspian Lake summer community.

The exhibit will examine the landscapes and buildings of Greensboro and the surrounding area from a historical perspective and will include images of sites now greatly changed from the views painted by Lukens between 1930 and 1960. Trained as an architect at MIT in the years immediately following World War I, she applied her schooling in design, her sense of color and her knowledge of the built environment

to delineate local sites that included barns, stables and farmhouses.

"We hope these paintings will impart a sense of the place Greensboro was in the years before and after the World War II, to both the summer and the winter residents of our beautiful lake community," said Mary D. Hewes, who conceived and directed the project for the historical society.

Twenty-two paintings have been assembled for this exhibit from holdings of members of the Lukens family, as well as those owned by friends in the Greensboro community. A brochure listing the paintings to be displayed will be available when the society is open in August on Tuesdays, Wednesdays, and Thursdays from 10 a.m. to 2 p.m. and Saturdays from 10 a.m. to noon.





Frances Lukens, left, Frances Lukens Hays, center, and Mary Darling Hewes, right, hosted a reception Saturday at the Greensboro Historical Society marking the opening of an exhibit of paintings by the late Frances Day Lukens. The show is at the society until Sept. 1. (photo by Dorothy M. Ling)

## A Legacy Of A Lifetime Offers Some Gems

by Claire Fern

GREENSBORO — Sometimes the symmetry of an event or events is just right. The Greensboro Historical Society has mounted the work of Frances Day Lukens who was a resident many years ago. True to Greensboro history and story, Frances Lukens encouraged friends and former classmates at Bryn Mawr to visit and buy property in Greensboro. Many of those connections lasted a lifetime and continued on to include the children of the original group. The show, "A Legacy of a Lifetime, Watercolor Paintings of Frances Day Lukens," can be seen at the Greensboro Historical Society building (next to Willeys Store) until Sept. 1.

Mary Darling Hewes, the daughter of one of Lukens' special friends, conceived and directed the various aspects of this show, which celebrates the 100th anniversary of Lukens' birth.

Frances Day Lukens attended Massachusetts Institute of Technology in the years following World War I. She was trained as an architect in an era when women were not welcome in many colleges and in a field largely dominated by men. This exhibit reflects her training as an architect. The watercolor paintings on view are focused on the buildings and sites of many of her favorite places around and near Caspian Lake.

Each painting has a photograph nearby showing that particular site today. There is also a photograph of Lukens' painting at one of the sites. There is an attractive and interest-

### REVIEW

ing brochure available that lists all the paintings and gives a short history of the artist. There is also a map that locates the various places she has painted.

The exhibit is mounted very well and the work is identified clearly. Each painting is related to the next one and the color flows through the exhibit. The work covers the period 1938 to late 1950 and is a picture history of what Greensboro looked like during those early growing years.

There are a few very small paintings that are gems. The "Five Golf Course Views" are framed together and are each well executed. "The Stone House and Barn," which was painted during a vivid leaf season, has a wonderful rust orange color that Lukens uses in different ways on many of the paintings. You can almost feel the breeze on the lake when viewing "Sailboats off Aspenhurst."

You will most certainly enjoy visiting the Greensboro area through Lukens' paintings. Her focus on the buildings and on the gardens and landscape are a delightful reminder of days gone by.

There is also a "Mystery Site," which was painted before 1940. Any one recognize it?

The Greensboro Historical Society building will be open in August on Tuesdays, Wednesdays, and Thursdays, from 10 a.m. to 2 p.m., and Saturday mornings from 9-11.

# Frances Day Lukens Centennial Exhibition

## Preliminary Statement

### Purpose:

The purpose of this project is to recognize the life-long creative achievements of **Frances Day Lukens** in the year of her centennial - 1897 - with a retrospective exhibition of her watercolor paintings of views of northern Vermont, at the Greensboro Historical Society.

**Frances Day Lukens** was a beloved member of the Greensboro community for more than 30 years. Not only did she bring her creative talents and great energy to the community of her summer residence, she also was responsible for attracting many friends from her Bryn Mawr years and Philadelphia connections to Caspian Lake. Her presence, like her graceful watercolors, continues to be felt in this community by the generations that have come here because of her.

The proposed exhibition will have a dual purpose: to celebrate her life and work, and to highlight Greensboro's historic past that we know only through old photographs and other images, and from anecdotal stories and research gathered by historians in the community. With this exhibit, showing buildings and landscapes, contemporary residents will have a greater understanding of Greensboro's many-layered past.

### What the exhibit will include:

*30 running feet*

The number of paintings in the exhibit will be determined by hanging space in the Historical Society building. We anticipate that no more than 20-25 paintings will be shown.

The exhibit could also include contemporary photographs of the scenes shown in the paintings, and a schematic map showing locations the paintings depict. A photographer from the community will be sought.

The exhibit will have text captions for each painting, with location, lender, and as much additional information as can be determined.

### Schedule and timing:

I propose that if we can locate the paintings this summer, a preliminary selection can be made by Labor Day, 1996, so that advance arrangements can be made while the cast of characters is in one place (Greensboro). Any additional research will be undertaken during the winter, and with permission from lenders, and with the assistance of the Historical Society, the selection of paintings would be finalized and then installed in early-mid August 1997. A final date will be determined by GHS and the schedule of Lukens family members.

*Aug 15 - Labor Day*



**Assignments:**

I will take overall responsibility for managing the logistics and the content, including research and writing, and the loans. Francy Hays has agreed to help with locating the paintings, and looking into conservation and re-framing, if needed. Susie Lukens Stone and Francy Hays-Case have also expressed interest in working with me on various elements of the exhibit. I intend to discuss these ideas with Anne Saunders and Alan Lukens in August.

**Projected costs:****Conservation and Framing May Be Required**

We are discussing the possibility of working with a framer in St. Johnsbury that might offer a discounted price for having a group of paintings rematted and reframed. We estimate this process would cost approximately \$30 per painting. If there are 10 or more paintings that require conservation and reframing, I propose that each owner make a tax-deductible donation to the GHS in advance of the reframing for his portion of the cost, and have the GHS pay the total discounted cost (which would therefore not include sales tax). Details of this part of the exhibit will have to be worked out after the selections have been made.

**Publicity/promotion**

We anticipate that there would be a notice about the exhibit in the Winter Historical Society newsletter, and will prepare a short piece for you.

**Security/Insurance::**

Does the Historical Society have insurance coverage on items it displays? This might be important to lenders. If not, we will discuss how to deal with any security concerns.

**Loans:**

We will arrange for pick up and delivery of paintings to a central (secure) location prior to the exhibit.

**Reception/opening:**

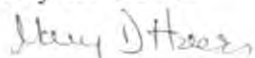
Plans and ideas to be discussed.

**Printed handout:**

To be discussed.

**My background:**

Over the course of more than 30 years working with museums, I have had experience in managing loan exhibits including for the Washington Print Club, and the Historical Society of Washington, D.C. I am presently a consultant in program development for the National Portrait Gallery. Mary D. Hewes



1821 Randolph Street, NW  
Washington, D.C. 20011

September 27, 1996

Barbara L. Woodward  
Greensboro Historical Society  
Greensboro, VT 05841

Dear Barbara:

You're back from your trip and ready for the rest of the fall! I hope you had a wonderful time. Here's the promised statement on the Lukens exhibit for the Fall GHS Newsletter:

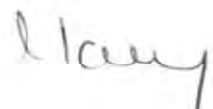
**Historic Landscapes to be 1997 GHS exhibit**

The familiar watercolor landscapes of Greensboro and environs painted by longtime summer resident Frances Day Lukens between 1930 and 1960 will be featured in an exhibit at the GHS in August 1997. This exhibit was conceived by Mary Darling Hewes with a dual purpose: to celebrate Frances Lukens' life and work in the centennial year of her birth, and to highlight the buildings and landscapes of Greensboro's historic past known to contemporary visitors primarily through old photographs and anecdotal stories - and the work of GHS.

Working with Frances Lukens' children, Alan Lukens, Anne Saunders and Francy Hays, Mary Hewes is identifying and assembling a selection of Frances Lukens' paintings of Greensboro-area scenes, buildings and landscapes for the exhibit. The images will include some structures that are still standing, and many now demolished.

Please contact Francy Hays or Mary Hewes c/o GHS if you know the whereabouts of a Lukens painting. Planning for the exhibit will continue through the winter and spring.  
(168 words)

I hope this will fit the bill. Let me know what's next. Best to Tom,





4/3/76

# Estimated Expenses for Lakes Exhibit at GETS -

1. Research printings 10 @ \$35 \$ 350  
(costs to be donated by each owner to GETS,  
+ GETS to pay - no tax)
2. Photography of existing sites (by T. Cook & F. Hays) 50.
3. Photo blow-up of FDC at Stone House Donated by T. Hays
4. Hanging Devices for printings (15)
5. Poster board for posters & captions (25.)
6. Handout - check list photorequired - 200 copies 10.
7. Press notice photorequired 10.  
postage 6.
8. Gas mileage (for research) to St. J.  
3 trips x 70 miles @ \$.25/mile 48. (donated by F. Hays)
9. Reception at GETS for 100 people.  
leaving 50  
cheese - crackers 50  
Soda 25  
Flowers donated
10. Incidentals 61

Total projected expense

\$ 700

1821 Randolph Street, NW  
Washington, D.C. 20011

July 27, 1996

Barbara L. Woodward, President  
Greensboro Historical Society  
Greensboro, VT 05841

Dear Barbara:

After some additional thoughts during the drive back to Washington last weekend, I have come up with the enclosed statement on the proposed exhibition celebrating Frances Lukens' centennial year, to be shown at the GHS in August of 1997.

I have also enclosed a chart showing a selection of Lukens watercolors that Francy Hays has come up with, to suggest the range and type of paintings to be included in the exhibit. For simplicity of logistics, my aim is to include paintings that are physically located in Greensboro. I hope also to make selections from a variety of lenders in order to involve the widest pool of people in the show.

The selection process should include a letter to the community, or at least to people known to have owned Lukens paintings, in order to bring out the best paintings as well as those known to be here in Greensboro.

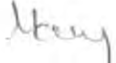
I hope the materials enclosed cover the issues you will need for discussion at your Board meeting to support the rationale for the exhibit.

I am excited about the possibilities for bringing people together through working on this project, which will bring historic images of Vermont's built environment, as reflected in Frances Lukens' paintings, to the attention of 1990s Greensboro-ites.

I will call you before I leave for the West August 7 to see if you need any additional information.

It was great fun to be with all of you at Squam! Thanks for urging us to attend. Larry loved it, too.

Best to all,

  
Mary Darling Hewes

Enclosures

cc: Francy Hays



7/26/96

### Frances Day Lukens Centennial Exhibition - Possible Selection of Images

Most recent known owner	Title or Description; building extant or demolished	Framed Size (vert. x hor.)	Condition; is conservation required	Date painted or acquired	Where painting is now	Best contact w. phone #	Painting signed Other comments
Greensboro Library	Caspian Inn (demolished) and Mill (now Miller's Thumb)				Greensboro Library		
Laura Drown	Drown's Mill				Laura Drown		
David Smith, Sr.	Walden Cemetery				David Smith, sr. or Highland Lodge		
Lukens/Saunders	Stone House with earlier barn (now demolished)				Lukens/Saunders Cottage		
Lukens/Saunders	Irish Barn (demolished)				Lukens/Saunders cottage		
Lukens/Saunders	View of Lake from ??				Lukens/Saunders Cottage		

Most recent known owner	Title or Description; building extant or demolished	Framed Size (vert. x hor.)	Condition; is conservation required	Date painted or acquired	Where painting is now	Best contact w. phone #	Painting signed Other comments
Nursing Home	Old Riding Stable (demolished)				Nursing Home		
Charlie Hays	Aspenhurst Point Rocks at Sunset extant!				F. Hays		
Francy Hays	Hardwick Street Barn (demolished)				F.Hays		
Francy Hays	Flowers				F. Hays		
Francy Hays	Cemetery- near P.Irwin's house (Rocking Rock Rd?) extant				F. Hays		
Francy Hays	Campbell Farm (demolished)				F. Hays		
Francy Hays	Small farm (Where? extant or demolished ?				F. Hays		



Frances Day Lukens Centennial Exhibition - Possible Selection of Images

3

Most recent known owner	Title or Description; building extant or demolished	Framed Size (vert. x hor.)	Condition; is conservation required	Date painted or acquired	Where painting is now	Best contact w. phone #	Painting signed Other comments
Francy Hays	Small farm where? (demolished)				F. Hays		
Francy Hays	Big Elm, head of lake				F. Hays		
Mary Hewes	Red Barn (on Stannard Mountain? probably demolished)	18 1/4" x 15 1/2"	Reframed & rematted w. acid-free backing 4/96	Acquired by Frances Darling in 1940s	Hewes - D.C.		Signature faint; no date
Jean Peale	View of lake from above Cemetery extant			Acquired by Frances Darling late 50s	Peales - Bronxville		
R & J Stevens	Black Farm - house				D. or J. Stevens		
B & T Woodward	Four Corners			1957-58-59	Barbara Woodward		
Phil Cook							
Jim Cook							

Frances Day Lukens Centennial Exhibition - Possible Selection of Images

4

Most recent known owner	Title or Description; building extant or demolished	Framed Size (vert. x hor.)	Condition; is conservation required	Date painted or acquired	Where painting is now	Best contact w. phone #	Painting signed Other comments